



YOUR CONFIDENCE SECURED



# MISSION



# EXPERIENCE

- Securing your **CONFIDENCE**. At Pentagon we have built our business on honesty, dependability and integrity.
- Because we insist on high quality, our custom shutters are consistently even, meaning that you can **TRUST** Pentagon.
- Our highly efficient state-of-the-art manufacturing process means you enjoy exceptional **VALUE** for money on time.

**DEDICATED TO TEAMWORK** - Our authorized dealer network across the United States and Canada means we've got you covered from shore to shore.

**INTERNATIONAL** - As part of a focused group of similar companies, a continual exchange of ideas and concepts with our overseas offices ensures our designs and products are up to date with international market trends.

Sydney, Australia  
Paris, France

Dusseldorf, Germany  
London, England

**WARRANTY** - Pentagon shutters are complimented with a comprehensive warranty that assures you that you have made the right choice.

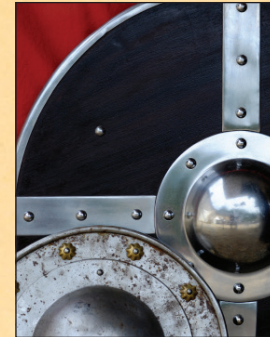
**GREEN** - Pentagon is committed to constantly improving its environmental policy. As a leader in protecting the planet, we utilize environmentally conscious production methods and materials.



# SHIELD

## VANDALISM

Today's rising crime dictates that we create solutions to protect our environment without compromise.



- Protects windows while stopping intruders.
- Eliminating glass breakage reduces ongoing maintenance costs.
- No disruptions caused by emergency clean-ups/board ups.
- Control the level of sunlight entering the room, making interior blinds obsolete.

## VALUE



# PROTECT



## LOCK-N-LEAVE

Pentagon shutters effectively comply with Federal, State and Provincial laws relating to the securing of liquor, tobacco and pharmaceuticals.



- Maintenance free.
- Stops identity theft from patient records.
- Easy manual or motorized operation available.
- Product and record storage protection during off hours.

# DETER



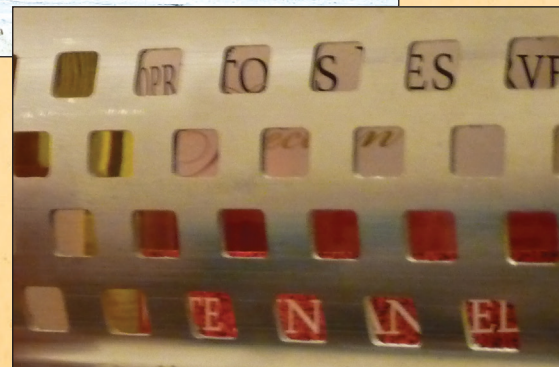
# FUNCTION

## SMASH-N-GRAB

Effortlessly creating a secure barrier to protect your work environment while you're away.



- Protects you from crimes of opportunity.
- One time application means guaranteed payback.
- Vision – Open when you're closed means increased sales.
- Unobstructed view when they are open – unlike window bars.



# VISION



# ELEGANCE



## PROTECT YOUR INVESTMENT

Aesthetically pleasing shutters add beauty and value to your property.



- Deter intruders giving peace of mind.
- Reduced insurance costs.
- Shield from extreme weather conditions.
- Insulated shutters provide energy saving, summer and winter.

# LUXURY



# GRANDEUR

## COMFORT BENEFITS

Easy to operate roller screens allow you to relax in peace.

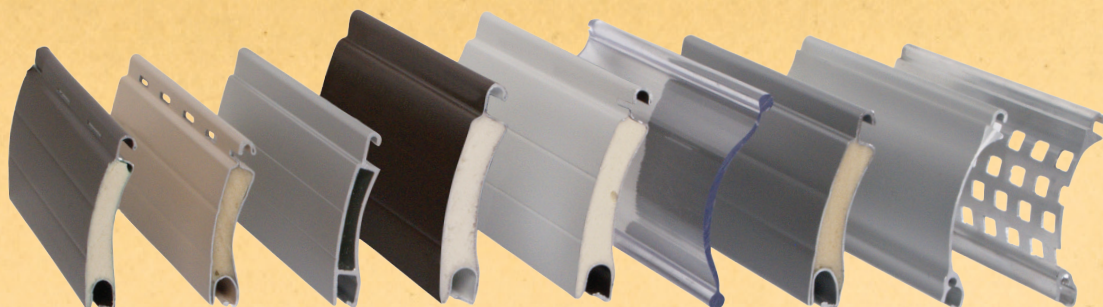


- Roller screens keep out solar heat gain reducing energy costs.
- You can still enjoy the views with Pentagon roller screens.
- Effectively blocking the damaging effects of sunlight.
- Pentagon roller screens are built to last, with precision for the perfect fit every time.



# FREEDOM





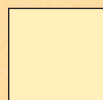
## SLAT DESIGNS

		<b>400 Series</b>	<b>440 Series</b>	<b>450 Series</b>	<b>500 Series</b>	<b>520 Series</b>	<b>530 Series</b>	<b>540 Series</b>	<b>560 Series</b>	<b>561 Series</b>
<b>TYPE OF SLAT</b>	<b>HEIGHT</b>	40mm	37mm	40mm	53mm	53mm	66mm	53mm	56mm	56mm
Roll Formed Aluminum - Regular Density Foam		●			●					
Roll Formed Aluminum - High Density Foam						●				
Roll Formed Aluminum - Ultra Hard Resin			●					●		
Extruded Aluminum				●					●	●
Clear Lexan							●			
Perforated										●
<b>COLORS AVAILABLE</b>										
Arctic White		●	●	●	●	●	●		●	●
Ivory Tusk		●			●		●			
Sand Beige		●	●	●	●					
Aluminum Grey		●	●		●	●	●	●		
Medium Brown		●	●							
Dark Bronze		●		●	●	OPTIONAL	●		●	●
Clear Anodized				●					●	●
Black		●								
<b>RECOMMENDED SIZES</b>										
Maximum Width		126"	192"	192"	168"	204"	120"	228"	192"	228"
Maximum Height		144"	144"	144"	144"	144"	98"	144"	180"	180"
Maximum Area		80ft <sup>2</sup>	140ft <sup>2</sup>	140ft <sup>2</sup>	110ft <sup>2</sup>	160ft <sup>2</sup>	50ft <sup>2</sup>	200ft <sup>2</sup>	200ft <sup>2</sup>	200ft <sup>2</sup>

## COLORS



Arctic  
White



Ivory  
Tusk



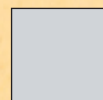
Sand  
Beige



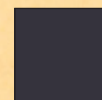
Aluminum  
Grey



Medium  
Brown



Clear  
Anodized



Dark  
Bronze



Black

Distributed By:

Alpine Glass Windows & Doors Ltd.  
9712-108 St.  
Fort St. John, BC V1J 0A7

Phone: 250.785.6409

Fax: 250.785.2133

Email: [sales@alpinewindows.coa](mailto:sales@alpinewindows.coa)  
[www.alpinewindows.ca](http://www.alpinewindows.ca)