

## Step 1: Measure for part length



Transfer required length to part by lining up coping guide to measurement.



## Step 2: Line up the coping tool on the Snap Cap, then mark with a pencil for cut off.

\*\* The Snap cap coping tool must be lined up properly on the Snap Cap before marking to cut\*\*



Right



Wrong



Mark for cut off

## Step 3: Trim the Snap Cap



Snip both sides off the Snap Cap, up to the leg on the underside.



Flip Snap Cap over and clip both legs down to surface of the Snap Cap. Cut at a slight angle leaning toward the Snap Cap.



Following the line, complete the rest of the cut.

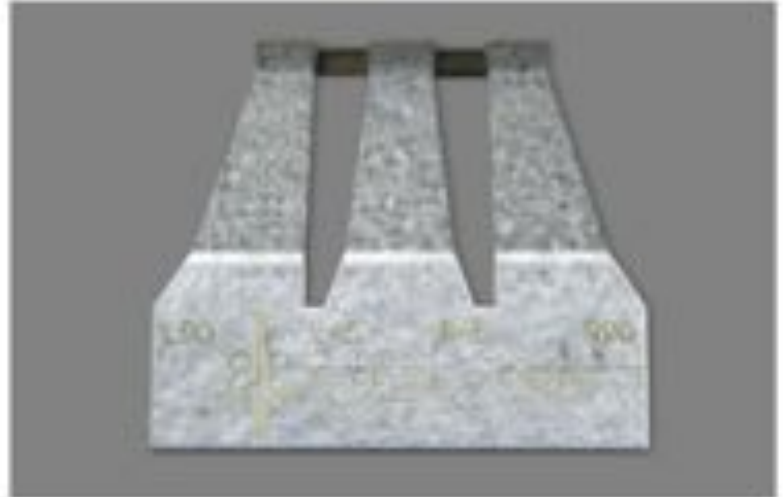


Click the Snap Cap into the Side Weatherstrip tightly to the corner.

**Step 4: Repeat marking and cutting steps for the second piece and click into place.**



If coping for 45-degree corners, use the inner guides on the Snap Cap coping tool for making the cut-off profile



90° Corner and marked pieces

45° Corner and marked pieces

